



OVENS WITH A (-W) IN THE MODEL NUMBER MUST BE VENTED AS SOLID FUEL EQUIPMENT

The following are the manufacturer's recommendations for venting the Wood Stone Mountain Series (MS) ovens. It is never appropriate to use "B vent" in any part of an exhaust system connected to a Wood Stone oven. All ducting material must be manufactured to the specifications of a grease duct. Due to the possibility of sparks entering the system, exhaust systems serving **SOLID FUEL** equipment **MUST** be vented separately from other (non-solid fuel) equipment. Submit your venting plans to your local authorities before proceeding with your installation, as there may be additional requirements in your area.

THERE ARE THREE OPTIONS:

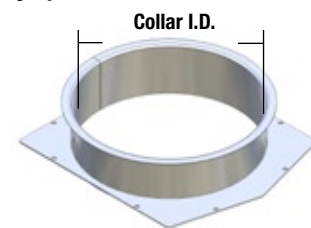
1. Direct Connection: A listed building heating appliance chimney, also listed as a grease duct as described in NFPA 96, connected directly to the oven flue collar and provided with a power ventilator listed for restaurant appliance exhaust. The power ventilator should be rated for a minimum of 300 degrees F (450 degrees F for W, W-IR, RFG-IR-W, and RFG-W). Wood Stone does not recommend the use of an in-line fan. **A field built grease duct, constructed and installed to the specifications of a grease duct as detailed in NFPA 96 or the International Mechanical Code, may also be used.**

A static pressure of -0.1 inches (-0.14 inches water column for W, W-IR, RFG-IR-W, and RFG-W solid fuel models) is necessary at the oven flue collar to ensure that flue gas temperatures do not exceed 300 degrees F (450 degrees F for W, W-IR, RFG-IR-W, and RFG-W solid fuel models) at the fan inlet. The CFM required to attain this static pressure will depend on the configuration of your particular installation but will probably be between 500 and 700 CFM. Wood Stone provides a port in the flue collar of the oven for insertion of a magnehelic gauge so the installer can monitor the draft to ensure proper operation of the venting system. This measurement may also be taken by inserting the end of the probe through the oven doorway, upwards to the oven flue collar.

NOTE: Double door ovens (Models ending in DD), have two flue collars, both must be connected and a static pressure of -0.1 inches water column (-0.14 inches water column for W, W-IR, RFG-IR-W, and RFG-W solid fuel models) must be maintained at each collar.

NOTE: If your MS-5, MS-6, or MS-7 oven is ordered from Wood Stone without a hood, it will have a round flue adapter installed to facilitate direct connection to a round duct. If the oven is to be installed under a hood, it **MAY** be necessary to remove the round adapter to properly position the hood. This is done by removing the screws that attach the adapter to the oven. Please contact Wood Stone if you have any questions.

Oven Model Series		Flue Collar I.D. (Nominal)
Mt. Adams	WS-MS-5	10 inch
Mt. Baker	WS-MS-6	10 inch
Mt. Rainier	WS-MS-7	10 inch



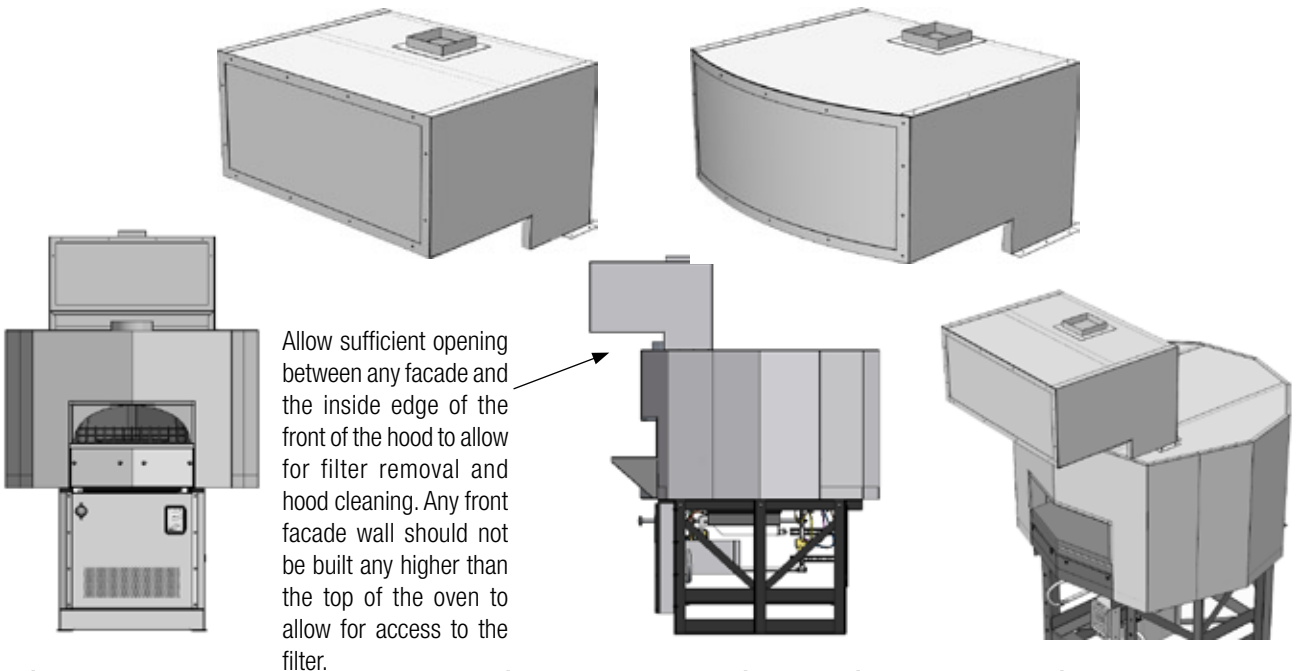
Flue Adapter

NOTE: MS-4 ovens come standard with a round 8" O.D. collar and do not require the flue adapter for a direct connection.

Install venting system in accordance with the duct manufacturer's instructions and in accordance with all local codes. All field built components must be built to the applicable codes and standards and are subject to the approval of the authority having jurisdiction.



INSTALLATION VIEWS OF A WOOD STONE HOOD



2. A Listed Type 1 Exhaust Hood or one that is constructed and installed in accordance with all relevant Local and National Codes. Wood Stone offers eyebrow-type hoods designed specifically for Wood Stone ovens. See specification sheet on ventilators for Wood Stone ovens.

Note that the notch of the hood is even with the front edge of the oven. The hood should be installed in accordance with the hood manufacturer's instructions, and with NFPA 96 and/or the applicable local and national codes.

Note that the notch of the hood is even with the front edge of the oven. The hood should be installed in accordance with the hood manufacturer's instructions, and with NFPA 96 and/or the applicable local and national codes.

3. Exhaust from Wood Stone gas-fired ovens (RFG models) can be vented using one of the previously mentioned methods OR can be combined with exhaust from other equipment, assuming the common duct meets the construction requirements listed in #1. If the Wood Stone oven is installed using the direct connect method, and is going to be tied into a common duct that is connected to any hoods; the system must be engineered so that the duct pressure at the oven flue collar is -0.1 inches W.C. (-0.14 inches W.C. for solid fuel models). Failure to properly engineer the venting system will severely compromise oven performance and reliability. Tying a direct connected Wood Stone oven into a common duct may not be a feasible solution for many installations. In these cases the oven must either be vented separately, or vented using a Type 1 hood.

It is never appropriate to use "B vent" in any part of an exhaust system connected to a Wood Stone oven. All ducting material must be manufactured to the specifications of a grease duct. Due to the possibility of sparks entering the duct, exhaust systems serving solid fuel equipment **MUST** not be combined with exhaust systems serving other (non-solid fuel) equipment.



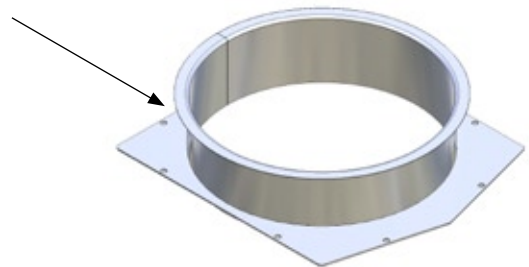
VERY IMPORTANT! WOOD STONE RECOMMENDS THAT YOU CONSULT WITH A QUALIFIED MECHANICAL ENGINEER AND SUBMIT YOUR VENTING PLANS TO LOCAL CODE AUTHORITIES BEFORE PROCEEDING WITH INSTALLATION.

MOUNTAIN SERIES OVENS -- FLUE ADAPTER (FOR USE WITH THE MS-5'/6'/7' OVENS)

The flue adapter unit is designed to facilitate connection to a round duct. Use the stainless steel screws provided to attach the flue adapter to the exhaust outlet on the oven.

NOTE: If using a Selkirk or other modular-type duct, attach according to the manufacturer's instructions. Otherwise, the duct must be attached with a full perimeter weld. If attaching to Selkirk duct, order the Selkirk Installation kit from Wood Stone. All duct must be grease-rated duct. If the oven is going to be enclosed, the flue adapter and exhaust outlet must be wrapped with an insulating material approved for use with a grease-duct.

Flue adapter



FLUE ADAPTER -- shown attached to oven flue collar

